



# RESIDENCE DETAILS

PROJECT NAME:	ORLA Infinity, Dorchester Collection, Dubai	PRICE:	Upon Application
UNIT OF INTEREST:		TOTAL SIZE:	8,392 sq.ft.
FLOOR:	9 <sup>th</sup>	PARKING:	4
BEDROOMS:	4 BR Duplex/pool	VIEWS:	Sea / Beach/ City Skyline View

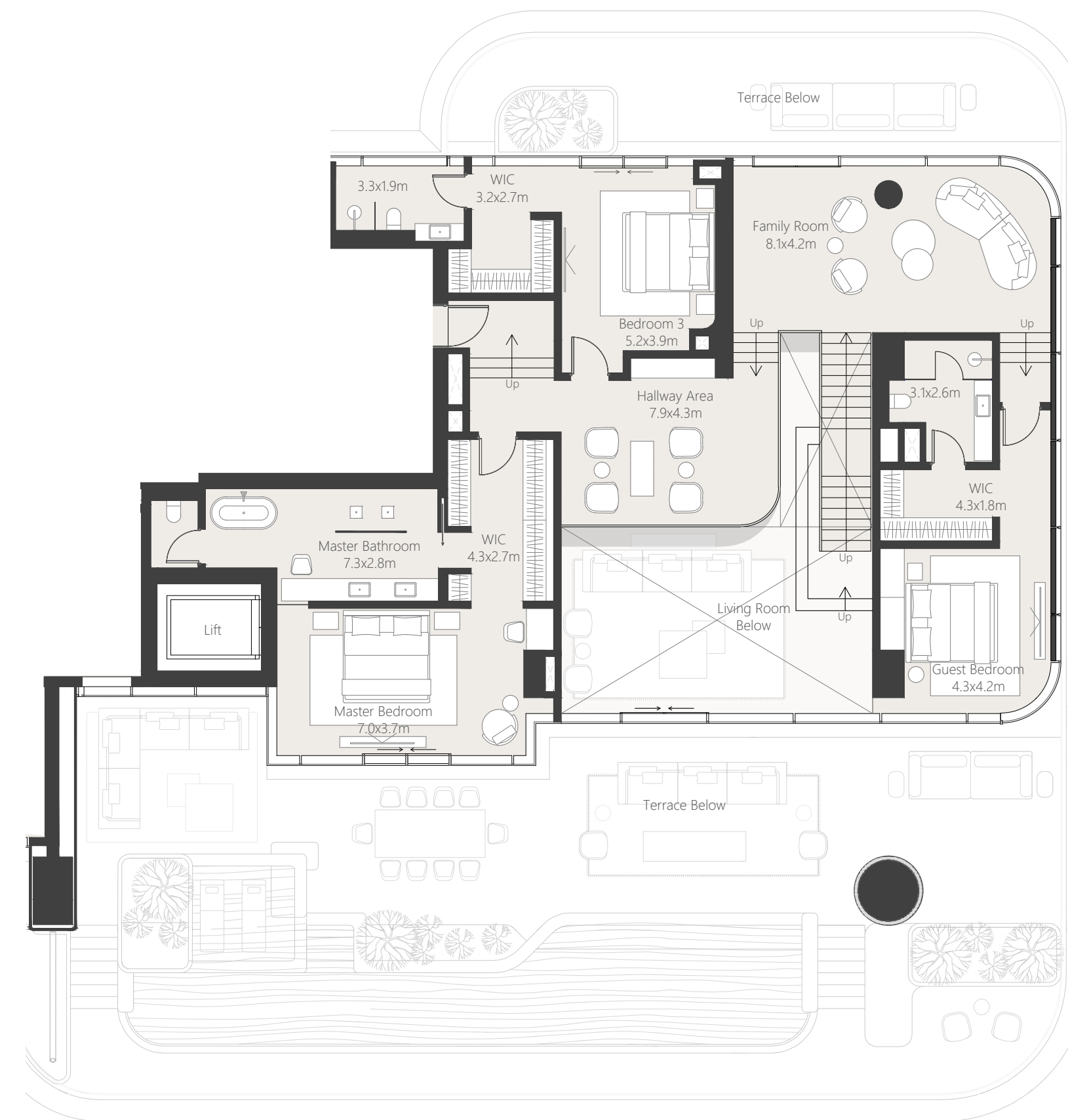
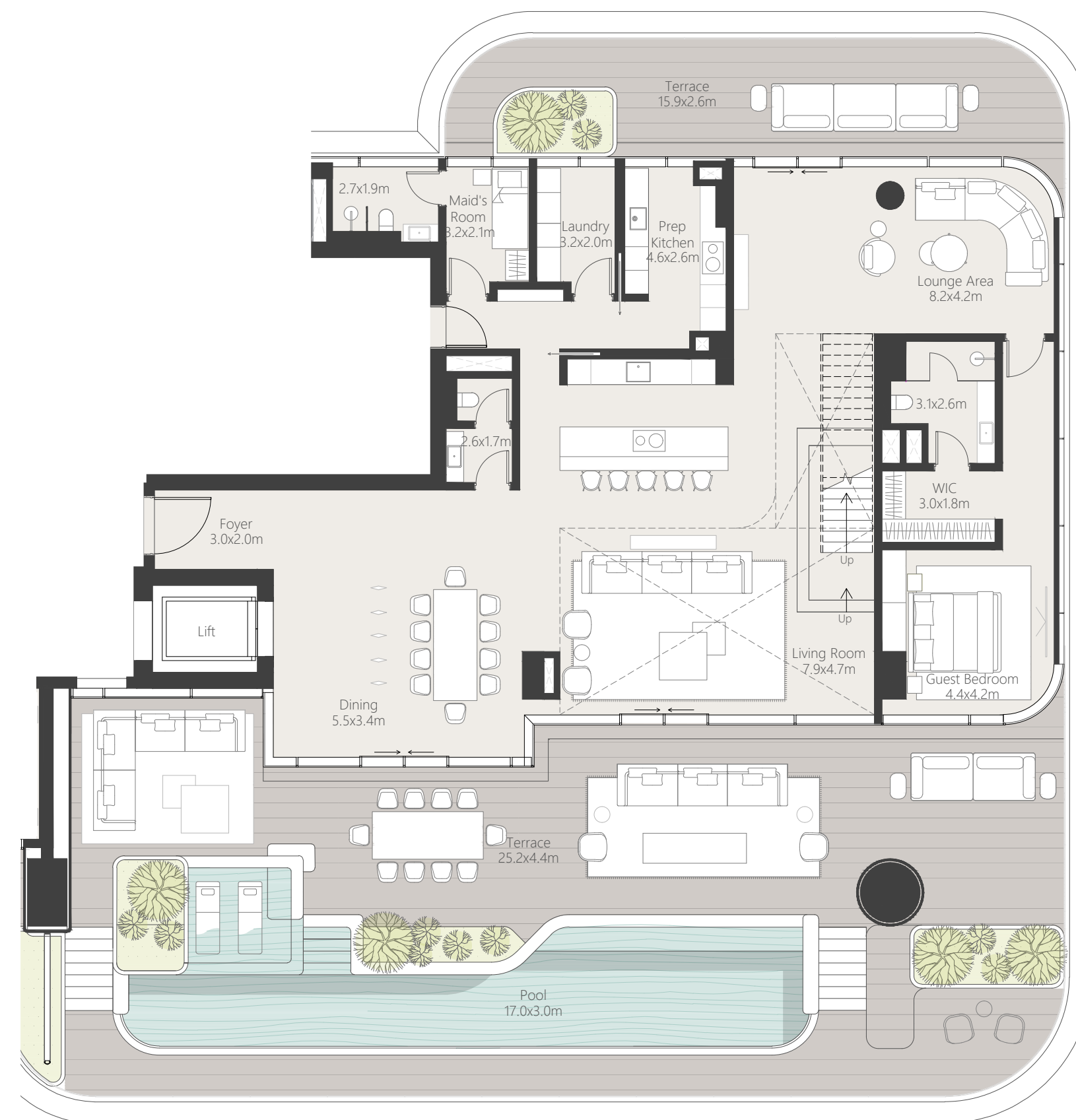
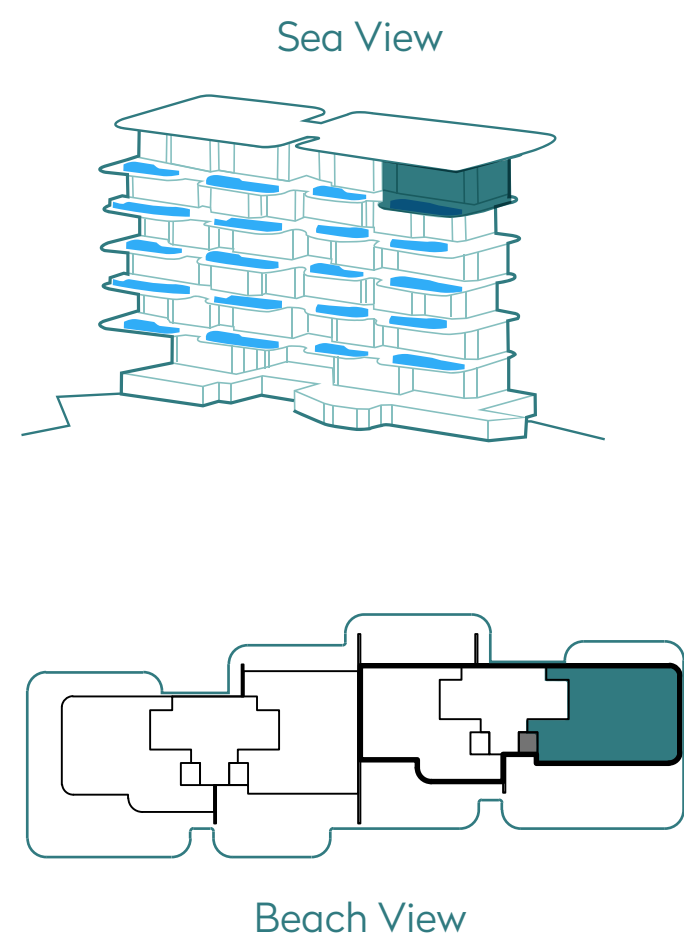
# PAYMENT PLAN

Installment No.	Payment Milestone	Payment (%)
Deposit	Reservation Contract Effective Date - Booking Fee	5%
1 <sup>st</sup> Installment	Sale & Purchase Agreement Effective Date (Within 30 days from Reservation Contract Effective Date)	20%
2 <sup>nd</sup> Installment	6 months from SPA Effective Date	15%
3 <sup>rd</sup> installment	12 months from SPA Effective Date	15%
4 <sup>th</sup> Installment	18 months from SPA Effective Date	15%
5 <sup>th</sup> Installment	On Completion Date	30%
	Total	100%



Lower Level

Upper Level



4 Bedroom Duplex with Pool  
5 Bathroom | 4 Parking space

Residence	488.26 sq.m.	5,255.58 sq.ft.
Terrace	291.34 sq.m.	3,135.95 sq.ft.
<hr/>		
Total	779.60 sq.m.	8,391.54 sq.ft.